



General information

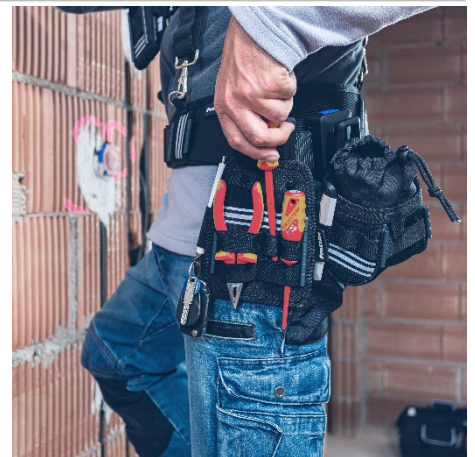
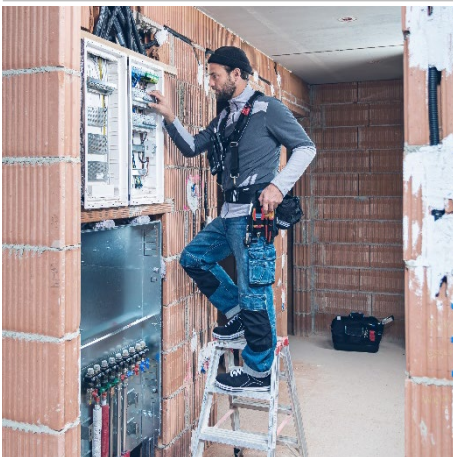
| | |
|--------------------|----------------|
| Product name | Tool Board S 6 |
| Item no. | 6100000963 |
| GTIN/EAN | 4262403280113 |
| Customs tariff no. | 42021219 |
| Country of origin | China |

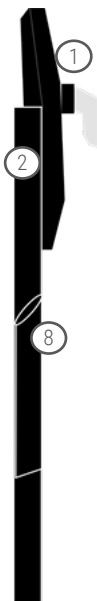
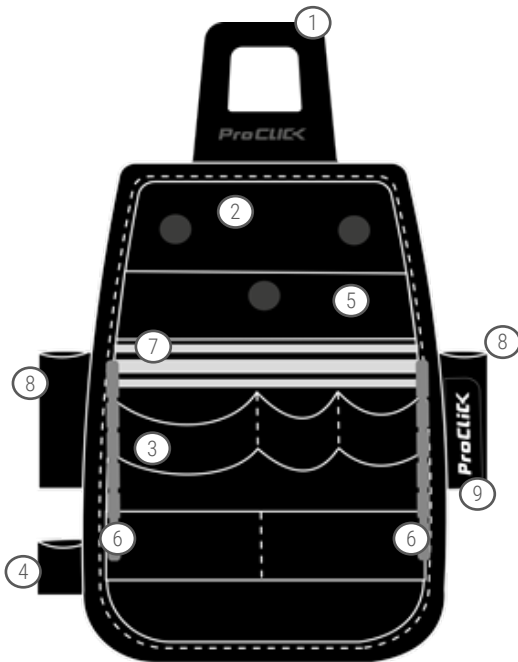
Product image



Characteristics

- Made of durable 1000D Polyester
- Integrated ClickUnit made of Polyamid PA6 GF30 and stainless steel
- Tool Board S 6 can only be used in combination with the ProClick Holder
- Individual positioning on the belt thanks to patented click connection between ClickUnit and Holder
- Tubes made of ABS for color individualization (optional available)
- More safety due to reflective safety stripes
- Intuitive and simple click connection





Technical data

| | | |
|------------------|---------|---------|
| Width | 160 mm | 6" |
| Height | 210 mm | 8" |
| Depth | 40 mm | 2" |
| Weight | 0.17 kg | 0.4 lbs |
| Loading capacity | 5 kg | 11 lbs |

- Compatible with
- Holder
 - UnitOrganizer
 - Tool Bag M



- 1 ClickUnit
- 2 Tool Board
- 3 Elastic loops
- 4 Webbing loop for carabiner
- 5 Elastic webbing for taking up the logo plate (logo plate optional available)
- 6 Tube, long (optional available)
- 7 Reflective safety stripes
- 8 Pen loops
- 9 ProClick logo flag