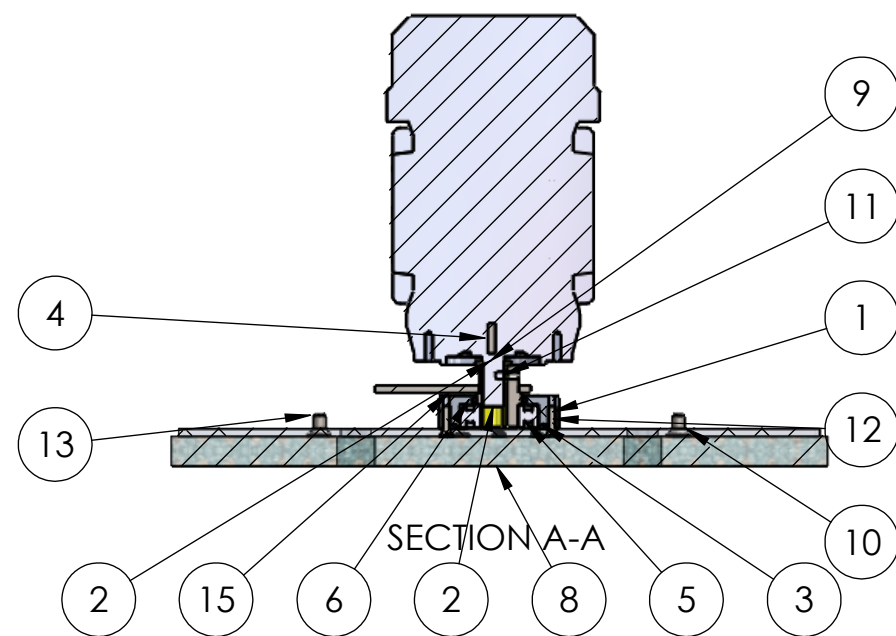
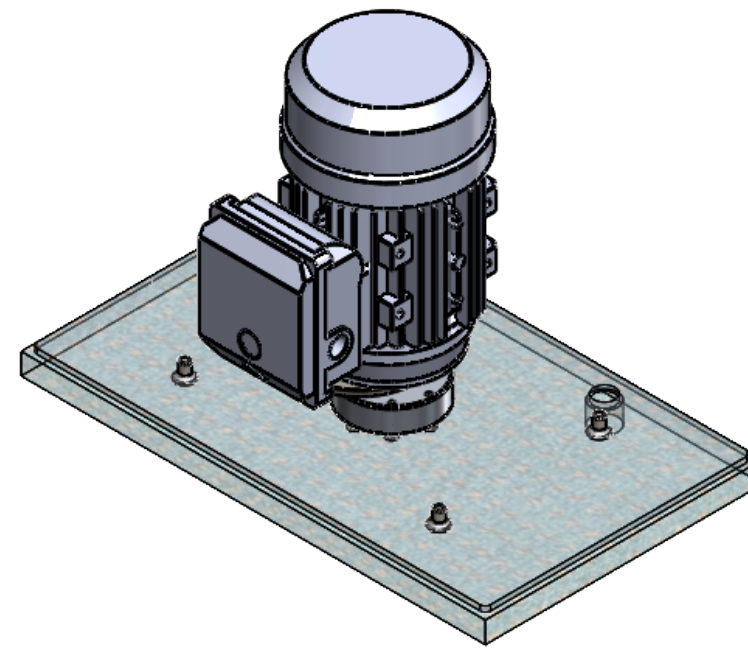
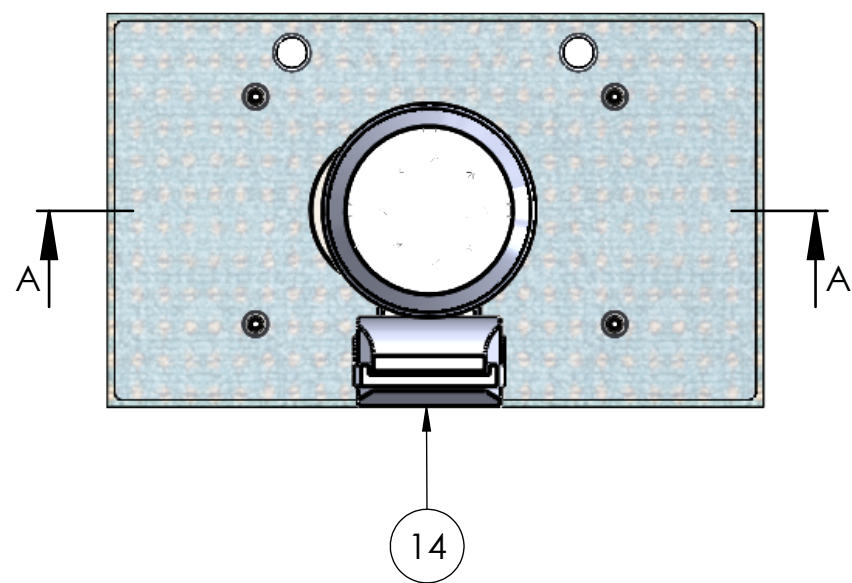


8 7 6 5 4 3 2 1

F
E
D
C
B
A



POS	Rev	PART NUMBER	DESCRIPTION	Material	EXC. NO.	QTY
1	1.2	0150-pol	LAGERHUIS KLEINE MACHINES	ALU	707018	1
2	1.0	0767	MOTOR 0.55 KW	INDUMEX	540041	1
3	1.0	0145-pol	O-RING NBR ZW 36624 56X3	NBR 70	800054	1
4	1.0	0152-pol	VLAKKE INLEGSPIE 30X6X6	A5	540011	1
5	1.0	DIN 625 - 6205	KOGELLAGER	INA	801514	1
6	1.0	0187-pol	O-RING NBR ZW 36624 30X3	NBR 70	800056	1
7	1.0	GLF 6205 K2	GOLFRING 52X42X0.5	STAAL	801515	1
8	1.0	0849	PAD VOOR BUDGET	ROOD	X	1
9	1.1	0153-pol	RING Ø24X14X3	RVS 304	705038	1
10	1.0	0771	VOETPLAAT 42-25	ALU	X10618	1
11	1.0	0154-pol	STELSCHROEF M6X8	A2	800094	1
12	1.0	DIN 7991-M05X20	IMBUSSCHROEF VK M5X20	A2	800103	8
13	1.0	DIN 7991-M08X14	IMBUSSCHROEF VK M8X14	A2	800096	4
15	1.0	0897	EXCENTRIEK 4025 GELAST	WELD ASS	X	1

UNLESS OTHERWISE SPECIFIED: DIMENSIONS ARE IN MILLIMETERS SURFACE FINISH: TOLERANCES: LINEAR: ANGULAR:			FINISH:	DEBURR AND BREAK SHARP EDGES	DO NOT SCALE DRAWING	REVISION 1.1
						AANTAL: 1X
DRAWN Rene				SIGNATURE	DATE 21-02-2019	TITLE: MOTOR+EXCENTRIEK+VOETPLAAT ASSEMBLY
CHK'D						
APPV'D						
MFG						
Q.A				MATERIAL: ASS	DWG NO. 0768	A3
			WEIGHT:	SCALE: 1:5	SHEET 1 OF 1	

8 7 6 5 4 3 2 1