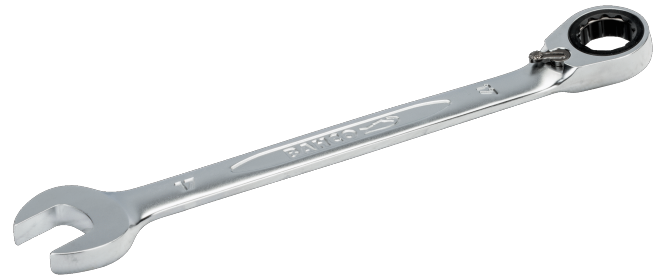




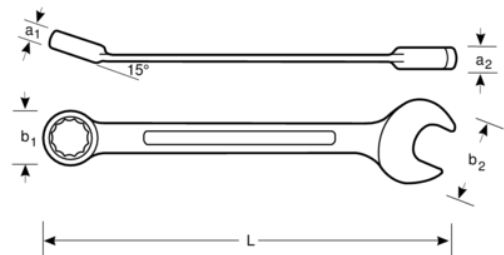
1RM

Metric Combination Ratcheting Wrenches with Chrome Finish



PRODUCT DETAILS



- Open end angle 15° with a slimmer head for improved accessibility
- Ring end angle 15° for knuckle clearance or better grip
- 5° action angle
- Switch for quick change of right and left direction
- Larger and bi-directional size marking for easy identification
- Ratchet in the ring for high productivity application
- 12-point Dynamic-Drive™ profile provides longer life for screws and nuts
- Chrome plated micro-matte finishing provides high quality surface
- High-performance alloy steel
- Standards: ISO 1711-1 and DIN 3113



Follow the Fish!



PRODUCT ATTRIBUTES

Product		L	a1	a2	b1	b2	
1RM-6	6 mm	128 mm	6.3 mm	3.9 mm	14 mm	15 mm	27 g
1RM-7	7 mm	140 mm	6.5 mm	4.6 mm	16.6 mm	16.7 mm	35 g
1RM-8	8 mm	140 mm	6.5 mm	4.6 mm	16.6 mm	16.7 mm	38 g
1RM-9	9 mm	150 mm	6.9 mm	4.9 mm	18.4 mm	18.8 mm	48 g
1RM-10	10 mm	159 mm	7.3 mm	5.3 mm	20 mm	20.8 mm	59 g
1RM-11	11 mm	165 mm	7.7 mm	5.6 mm	21.8 mm	23 mm	67 g
1RM-12	12 mm	172 mm	8.2 mm	6.0 mm	22.7 mm	25 mm	82 g
1RM-13	13 mm	178 mm	8.8 mm	6.4 mm	24.7 mm	27.1 mm	95 g
1RM-14	14 mm	191 mm	9 mm	6.8 mm	27 mm	29.2 mm	113 g
1RM-15	15 mm	200 mm	9.4 mm	7.0 mm	28.3 mm	31.3 mm	130 g
1RM-16	16 mm	208 mm	9.9 mm	7.2 mm	30 mm	33.4 mm	158 g
1RM-17	17 mm	226 mm	10.3 mm	7.7 mm	31.8 mm	35.5 mm	180 g
1RM-18	18 mm	237 mm	10.7 mm	8.2 mm	32.8 mm	37.6 mm	213 g
1RM-19	19 mm	248 mm	11.2 mm	8.8 mm	33.8 mm	39.7 mm	233 g
1RM-21	21 mm	290 mm	13 mm	9.0 mm	40 mm	46 mm	343 g
1RM-22	22 mm	290 mm	13 mm	9.0 mm	40 mm	46 mm	343 g
1RM-24	24 mm	323 mm	14.5 mm	10.0 mm	46 mm	52 mm	503 g
1RM-27	27 mm	359 mm	15.5 mm	10.5 mm	52.5 mm	56.5 mm	550 g
1RM-30	30 mm	393 mm	17 mm	11.4 mm	58.5 mm	62.7 mm	750 g
1RM-32	32 mm	425 mm	17.5 mm	12.5 mm	62.5 mm	66.4 mm	900 g

